



Official Route For 2007 Bike Source Tour Of Ohio Announced

One of America's Premier Cycling Events to Cover 350 Miles and Longest Amateur Only Stage Race in the U.S.

Organizers have unveiled the 2007 Bike Source Tour of Ohio and have gone back to a six day format for its 15th year. The 2007 Bike Source Tour of Ohio will cover over 350 miles in six days, making it the longest amateur stage race in the U.S.

From June 18th – 23rd, the Bike Source Tour of Ohio will visit 6 Host Communities, which will provide the start and finish locations for the six stages.

On Monday, June 18th, the Bike Source Tour of Ohio's first leader will receive the first yellow leader's jersey, supplied by Champ-Systems in Wapakoneta, Ohio. Wapakoneta is located just between Toledo and Dayton, Ohio along I-75. The first stage will be a Down Town Wapakoneta criterium with six corner, and flat. You can expect a big crowd at the opening stage as this will be our annual visit to the Great Ohio Bicycle Adventure recreation bike ride running the same week as the Bike Source Tour of Ohio.

The Great Ohio Bicycle Adventure annually attracts over 3,500 recreational cyclists, and they all come out to this stage of the Bike Source Tour of Ohio and cheer on the racers.

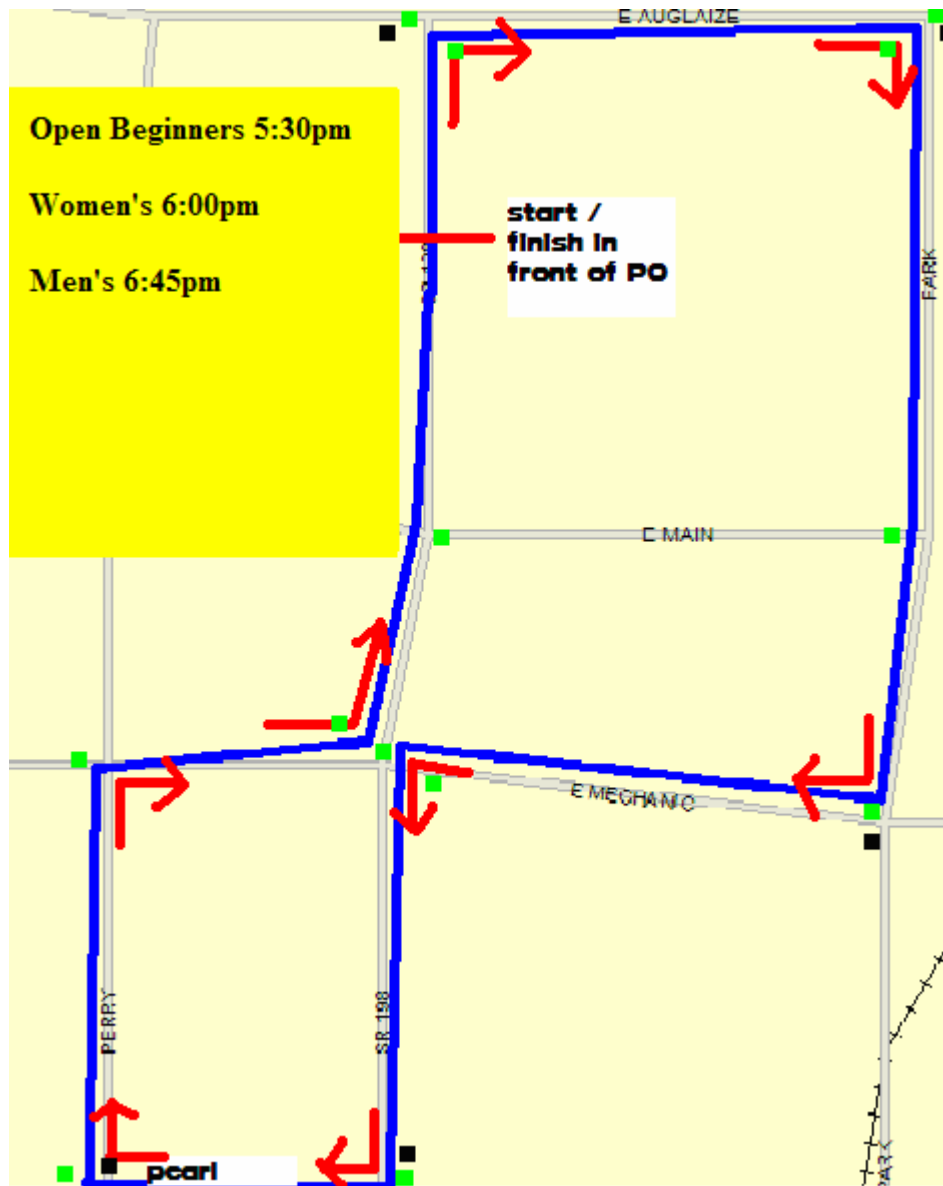
The Bike Source Tour of Ohio is considered one the essential stepping stones for Elite athletes on their way to the professional ranks. The Bike Source Tour of Ohio with it's legendary stages will challenge some of America's most elite cyclist at the same time, entertain thousands of spectators through-out the week.

This year race route has the blend of short fast criterium courses and long hard road stages in locations like Hocking County, and Perry County. The Bike Source Tour of Ohio is an annual summer time staple for Ohio and attracts a sale out field of 100 athletes from all over the United States, and teams from New Zealand, Belgium, and Canada.

JUNE 18TH	WAPAKONITA	PRO 1-3	40 M CR
		WOMEN	30 M CR
JUNE 19TH	GAMBIER	PRO 1-3	50 M RR
		WOMEN	40 M RR
JUNE 20TH	LOGAN	PRO 1-3	70 M RR
		WOMEN	50 M RR
JUNE 21ST	WORTHINGTON	PRO 1-3	40 M RR
		WOMEN	25 M RR
JUNE 22ND	YELLOW SPRINGS	PRO 1-3	50 M RR
		WOMEN	40 M RR
JUNE 23RD	SPRINGFIELD	PRO 1-3	40 M CR
		WOMEN	30 M CR

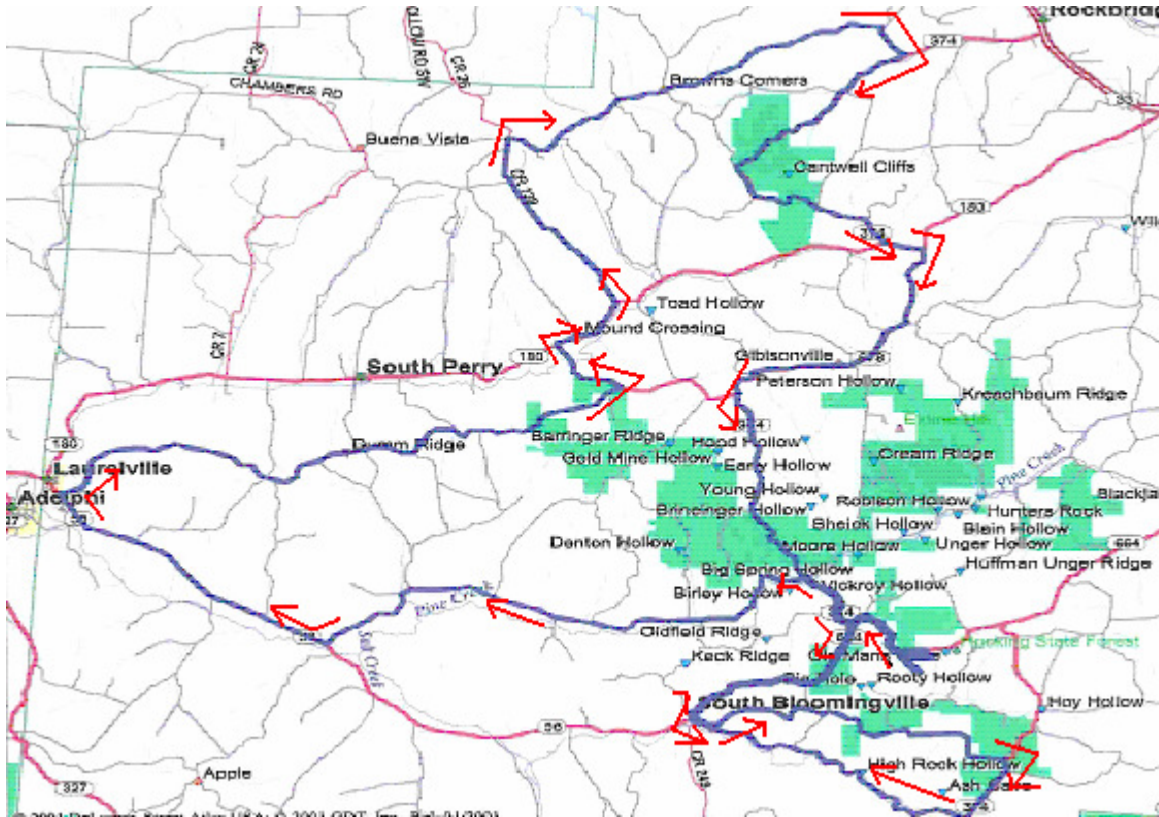
MAPS AND COURSE DESCRIPTIONS

STAGE ONE



June 18th, Wapakoneta, Ohio – A 1K flat 6 corner course in Down Town Wapakoneta

STAGE THREE

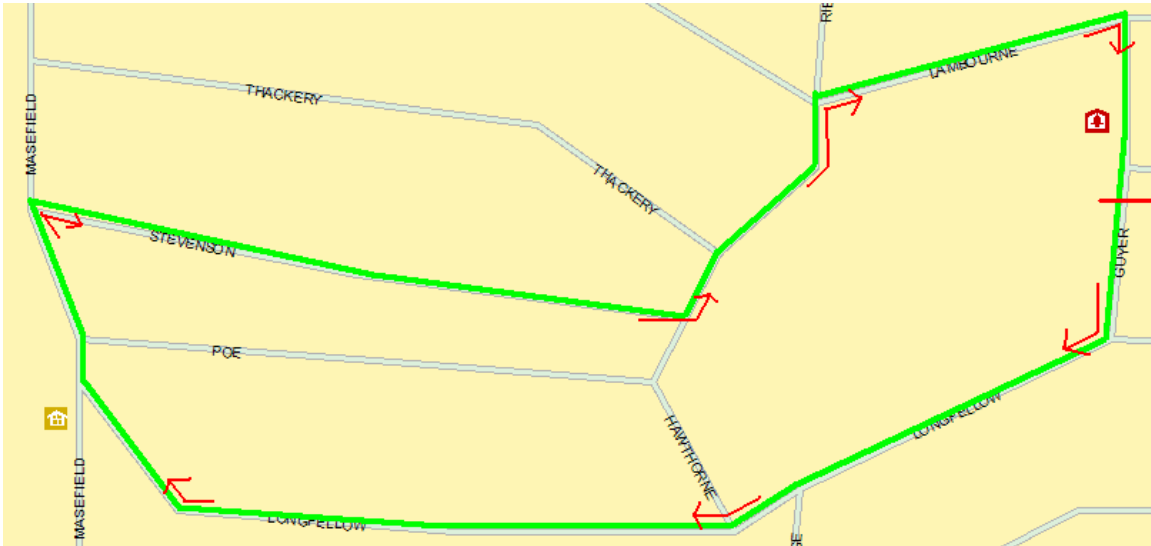


Start	HH State Park Lodge	0.0	L	SR374	42.5	
L	SR664	0.7	R	Conkles Hollow Climber's Points	45.9	
R	SR374	1.9	R	SR664	46.9	
L	Big Pine Rd.	2.9	WOMEN Left turn here and back to the Lodge @2.2M			
R	SR56	9.7		S. Bloomingville	49.6	
	Laurelville	13.8	L	SR56	49.6	
R	Thompson Ridge Rd.	13.8	L	Chapel Ridge Rd.	49.9	
	Feed Zone	21.0	L	Chapel Ridge Climber's Points	49.9	
L	SR374	21.8	R	SR374	54.3	
R	SR180	22.9	R	SR56	55.3	
L	Jack Run Rd.	24.0		S. Bloomingville	59.4	
	Jack Run Hill Climber's Point	26.2	R	SR664	59.4	
R	Buena Vista Rd.	27.1		Glick Hill Climber's Points	62.0	
R	Opossum Run Rd.	32.2	R	Lodge Rd.	63.8	
R	SR374	32.8		Finish	HH SP Lodge	64.1
	Cantwell Cliff's Climber's Points	34.0				
L	SR180	38.1				
R	SR678	38.6				
	Gibinsonville/Feed	41.0				

Wednesday, JUNE 20, 2007 1:00pm Road Race

Old Man's Cave State Park Lodge, Logan, OH - This is an 64M and 48.1 for the women out and back road race. This course offers some of the biggest hills in Ohio; including the famous Jack Run, Cantwell Cliff, Chapel Ridge, and Glick Hill. There is a 1-mile climb to finish line at lodge.

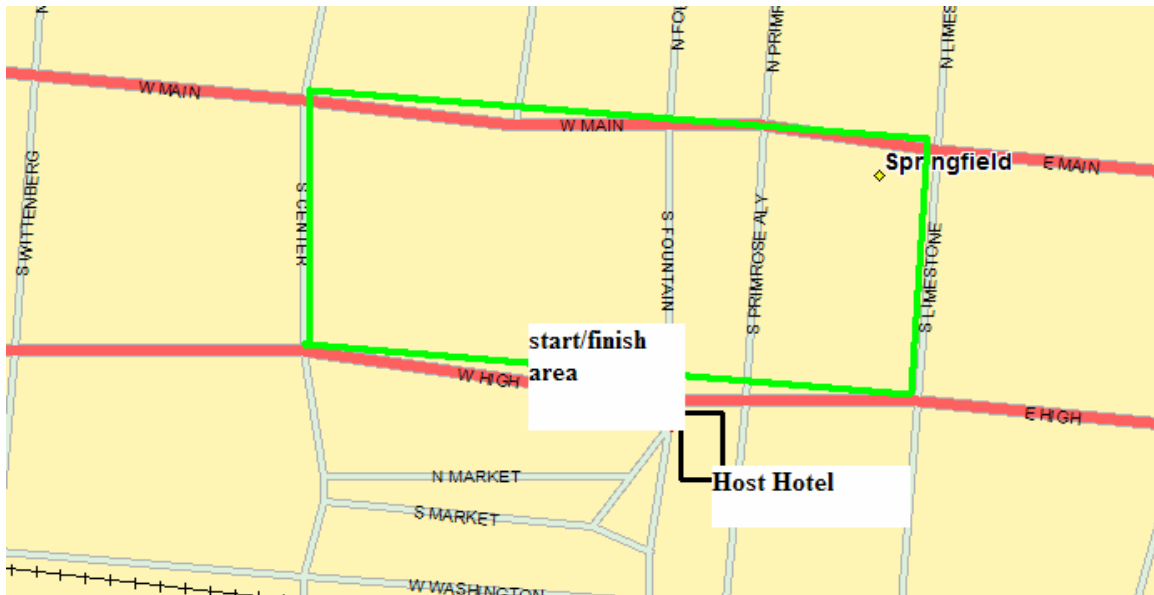
STAGE FOUR



Thursday, JUNE 21, 2007 7:00pm Circuit Race

Worthington, OH - This is a 40M for the men and 25M for the women circuit race . This course offers a nice in town 1.2 mile course; including a small, big ring hill each lap

STAGE SIX



June 23rd, Springfield, Ohio – A 1K flat 4 corner course in Down Town Springfield

Time Table

5:00pm	Masters 40-49, 50+59, 60+	20 miles
5:01pm	Juniors 13-15,16-18	10/20 miles
6:00pm	Cat. 5/Open Men	10 miles
6:01pm	Cat. 4 / Open Women	10 miles
6:45pm	Cat. 3-4 Men	30 miles
6:46pm	Pro 1-3 Women	20 miles
8:00pm	Pro 1-3 Men	40 miles

Daily awards and final awards for entire Tour of Ohio directly after the Pro 1-3 Men's Final.

WAPAKONETA, OHIO, WHICH WILL ALSO, BEING HOSTING THE GREAT OHIO BICYCLE ADVENTURE RECREATIONAL TOUR OF OHIO. WE EXPECT OVER 3,000 SPECTATORS TO ATTEND THE OPENING STAGE OF THE BIKE SOURCE TOUR OF OHIO.

THE 40 MILE STAGE AND 30 MILE STAGE FOR THE WOMEN WILL FAST AND TRILLING ON THE DOWN TOWN WAPAKONETA SIX CORNER COURSE. THE START AND FINISH AREA WILL BE IN FRONT OF THE CLASSIC OHIO SMALL TOWN COURTHOUSE.

STAGE TWO WILL START AND FINISH IN GAMBIER, OHIO, AND THE HOME OF KENYAN COLLEGE. THIS WILL BE THE FIRST OF THREE DAYS OF HILLY RACING.

THE GAMBIER COURSE IS A TEN MILE LOOP THAT THE MEN WILL COVER FIVE TIMES, AND THE WOMEN WILL GO FOUR LAPS. ON EACH LAP THERE ARE TWO HILLS. THE FIRST HILL IS ON BAKERS STREET AND IS A LONG 1.5 MILE ROLLER AS IT GOES UP CLIMB ON A NARROW COUNTRY LANE. THE SECOND CLIMB IS A 0.5 MILE CLIMB UP THROUGH THE FINISH AREA IN THE VILLAGE OF GAMBIER.

STAGE THREE WILL BE THE JEWEL STAGE IN THE HOCKING HILLS REGION OF THE STATE. THIS IS A 72 MILE LOOP FOR THE MEN AND A 50 MILE LOOP FOR THE WOMEN. THE HOCKING HILLS COURSE IS ONE THE MOST CHALLENGING RACE COURSES IN UNITED STATES. THE FAMOUS CLIMBS OF JACK RUN, CANTWELL CLIFFS, CONKLES HOLLOW, CHAPAL RIDGE, GLICK HILL, AND THE ONE MILE CLIMB TO THE FINISH LINE AT THE HOCKING HILL STATE PARK LODGE WILL CHALLENGE THE BEST CLIMBERS IN US RACING.

STAGE FOUR WILL TAKE THE BIKE SOURCE TOUR OF OHIO TO THE CITY OF WORTHINGTON FOR THE FIRST TIME. THE MEN WILL COVER A LOOPING COURSE THAT TRAVELS THROUGH NEIGHBORHOODS OF WORTHINGTON FOR A TOTAL DISTANCE OF 40 MILES, AND THE WOMEN WILL DO A RACE OF 25 MILES AND FINISH IN MIDDLE SCHOOL.

STAGE FIVE WILL TAKE THE BIKE SOURCE TOUR OF OHIO TO YELLOW SPRINGS, OHIO AND HOME OF ANTOCH COLLEGE. WITH A DOWN TOWN YELLOW SPRINGS START AND FINISH THE RIDERS WILL LEAVE YELLOW SPRINGS TO COVER 60 MILES ON A TEN MILE LOOP THROUGH GREEN COUNTY. EACH LAP INCLUDES THE FAMOUS DEVILS BACK BONE CLIMB. AFTER FIVE LAPS ON THE RURAL LOOP THE RACE WILL RETURN TO YELLOW SPRINGS FOR A DOWN TOWN FINISH. THE WOMEN WILL DO THE SAME COURSE AS THE MEN, BUT WITH ONE LESS LAP ON THE RURAL GREEN COUNTY COURSE.

STAGE SIX IS IN DOWN TOWN SPRINGFIELD, (CENTER CITY CRITERIUM) WILL BE CONDUCTED ON A FOUR CORNER, FAST AND WIDE CRITERIUM COURSE. THIS FINAL DAY OF THE BIKE SOURCE TOUR OF OHIO WILL FEATURE A FULL DAY OF CYCLING, RUNNING, AND FITNESS EXPOS.

THE MEN WILL COVER A DISTANCE OF 40 MILES, AND THE WOMEN WILL GO A DISTANCE OF 30 MILES. IN ADDITION TO THE BIKE SOURCE TOUR OF OHIO FINAL THERE WILL BE RACING FOR MEN CATEGORY 3,4,5, MASTERS MEN, AND JUNIORS. THERE WILL BE A 5K RUN TO FINISH OFF THE DAY, AND A SPECIAL GUEST THAT WILL BE ON HAND TO START THE 5K.

SPRINGFIELD WILL BE ROLLING OUT THE RED CARPET FOR THE BIKE SOURCE TOUR OF OHIO, AND WE EXPECT LARGE CROWDS IN ATTENDANCES.

BIKE SOURCE TOUR OF OHIO CHAMPION'S HISTORY

2006 – FIVE STAGES, WINNER, BOBBY LEA

2005 – SIX STAGES, WINNER, MATT KELLY

2004 – SEVEN STAGES, WINNER, CALEB MANON

2003 – SIX STAGES, WINNER, BRIAN SHEEDY

2002 – SEVEN STAGES, WINNER, PAUL MARTIN

2001 – SEVEN STAGES, WINNER, TIM JOHNSON

2000 – SEVEN STAGES, WINNER, DIRK BOUCHARD HALL

1999 – FIVE STAGES, WINNER, BRAT WELLENS

1998 – TEN STAGES, WINNER, JOHN LIESYWN

1997 – TWELVE STAGES, WINNER, ROBERTO GAGGIOLI

1996 – SEVENTEEN STAGES, WINNER, HARM HANSON

1995 – TEN STAGES, WINNER, GRAEME MILLER

1994 – TEN STAGES, WINNER, GRAEME MILLER

FOR MORE INFORMATION CONTACT;

**TYM TYLER
614 563 3434**

WWW.TEAMCOLUMBUS.ORG

TYMTYLER@TEAMCOLUMBUS.ORG